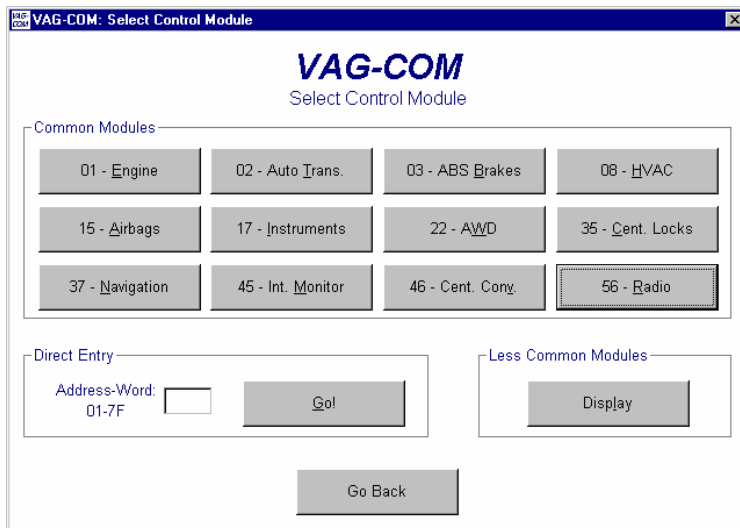


<http://www.vwnavi.co.uk>

## Coding your VW Navigation Unit



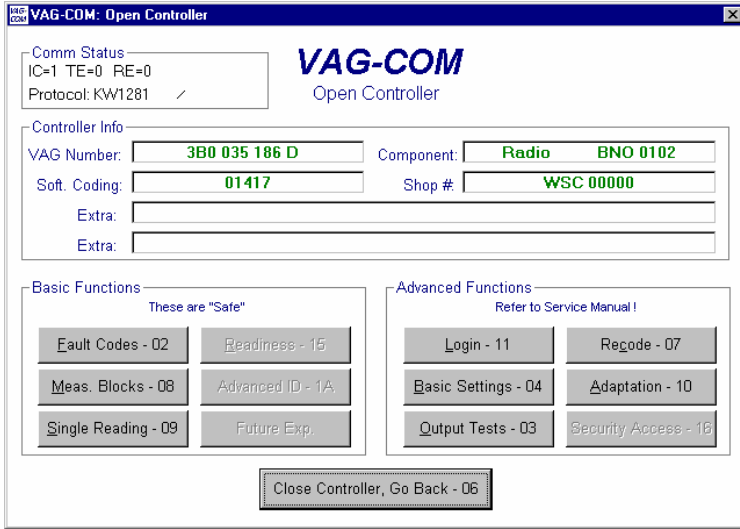
Using Vag-Com ensure that the Navigation unit and car ignition is switched on, start Vag-Com



From the Control Module Selection screen select 56 – Radio



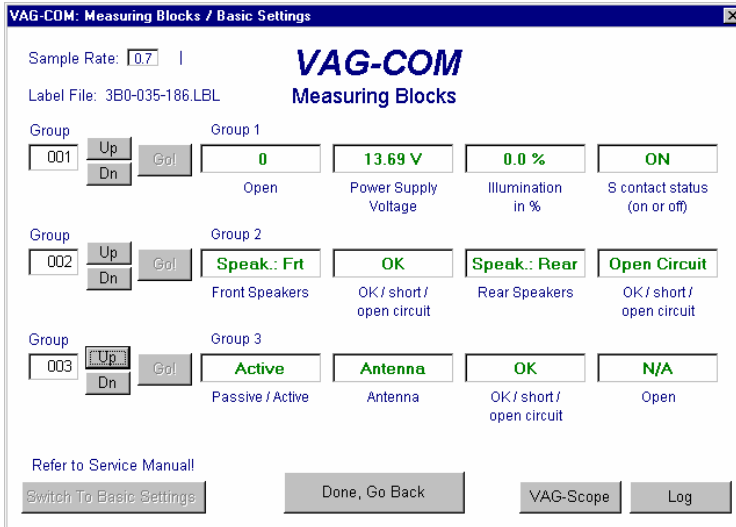
The radio will go off and the screen will display “Diag”, in addition if you have an instrument cluster display this will also display “Diag”. You may hear the odd click from the speakers, this is normal and is caused by the unit checking the connection of the speakers.



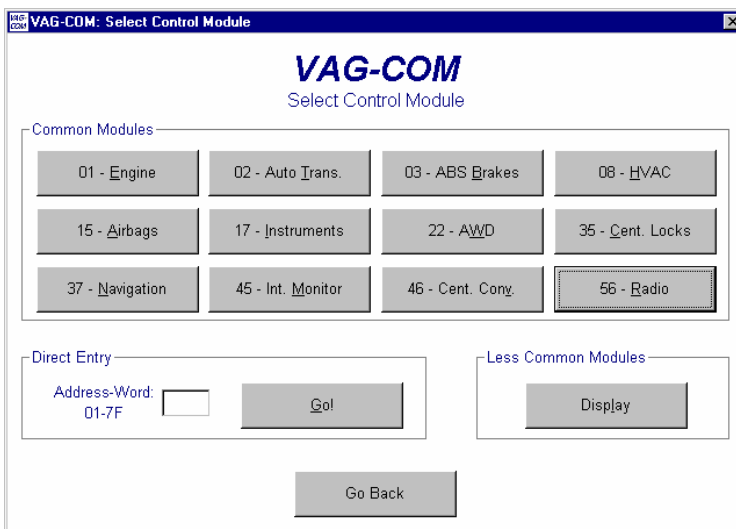
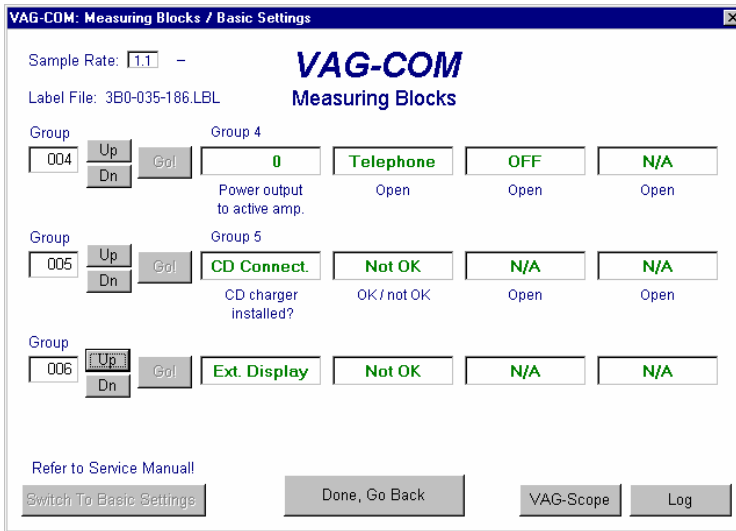
The item of interest on this screen is the Soft Code use the table below to set the Soft code using the Recode-07 function

1	2	3	4	5	Function
↓	↓	↓	↓	↘	Additional Equipment 1 = Active (Amplified) Aerial Std on Golf 2 = CD Changer 4 = Second (In Dash Panel) Display "FIS" (Add the total for the options 7 = all)
↓	↓	↓	↓	↓	Additional Amplifier 0 = No Additional Amplifier 1 = Bose Sound System 2 = Nokia DSP Sound System
↓	↓	↓	↓	↓	Number of Speakers 2 = 2 Front 4 = 2 Front 2 rear
↓	↓	↓	↓	↓	Sound Matching Golf 3 Door = 2 Golf 4 5 door = 1 Golf Estate = 8 ?
↓	↓	↓	↓	↓	Country 1 = Non Europe Market 0 = Europe Market

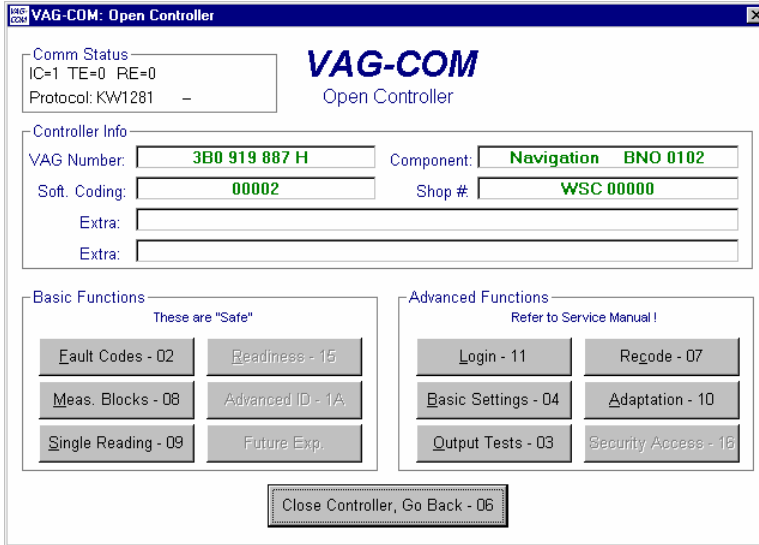
Therefore 01417 is a Navigation system fitted to a European 5 door Golf, with Bose Sound System, CD changer, active aerial and FIS display



The Measurement Blocks for the Radio part of the Navigation System are fairly straight forward, note for the bench test I had no rear speakers, CD changer or FIS connected.



Next return to the Select Control Module and select 37 – Navigation (Note if you have the TV tuner it's Control Module 57)



For the navigation Unit only soft code 00002 works, so no need to change this.

Adaptation does require changing, see table below for values

### Adaptation Channel 01 – Tyre Circumference

Set this value in accordance with the table below

Value	Tyre Size
1935	195/65 R15
1910	205/60 R15
1930	205/55 R16
1930	225/45 R17
1937	255/35 R18
1895	185/65 R15
1935	195/65 R15

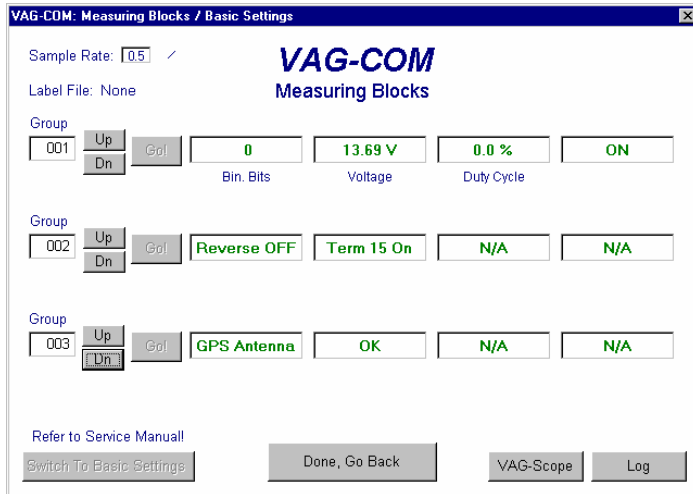
### Adaptation Channel 02 – Pulses per revolution

Set this as follows (For Golf Mk 4 only)

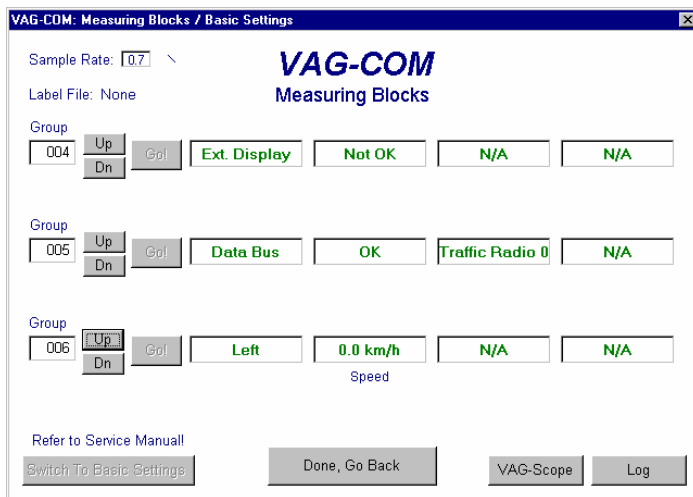
- 8 If you have used the Gala wire for speed sense
- 43 If you have connected the speed pulse to the ABS

### Adaptation Channel 03 - Diagnostics

Leave this at 0



The Measurement blocks for the Navigation side are self explanatory, Group 002, reverse is as it says, if you select reverse gear it goes to Reverse ON, terminal 15 is the ignition ON.



Group 004 is the FIS if fitted and coded, Group 005 is the internal data bus and if you have a TMC unit "Traffic Radio" goes to 1

Group 05 is the speed pulse, so if you go for a drive it will show the speed in Km/h

That's it, check for and clear any fault codes and unplug the Vag-Com unit